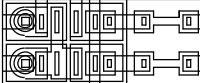
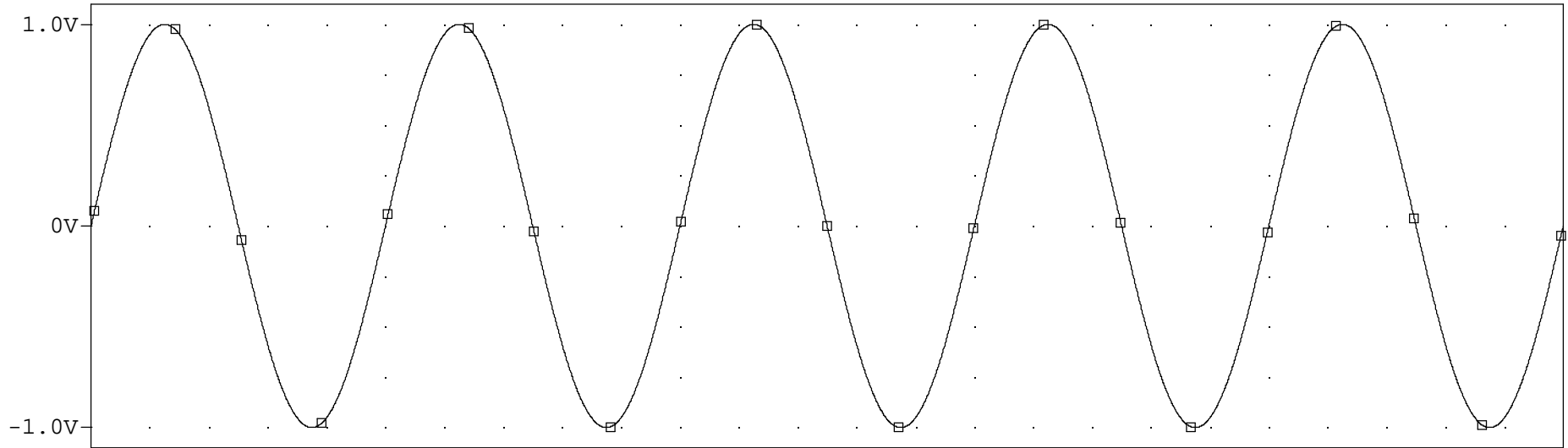


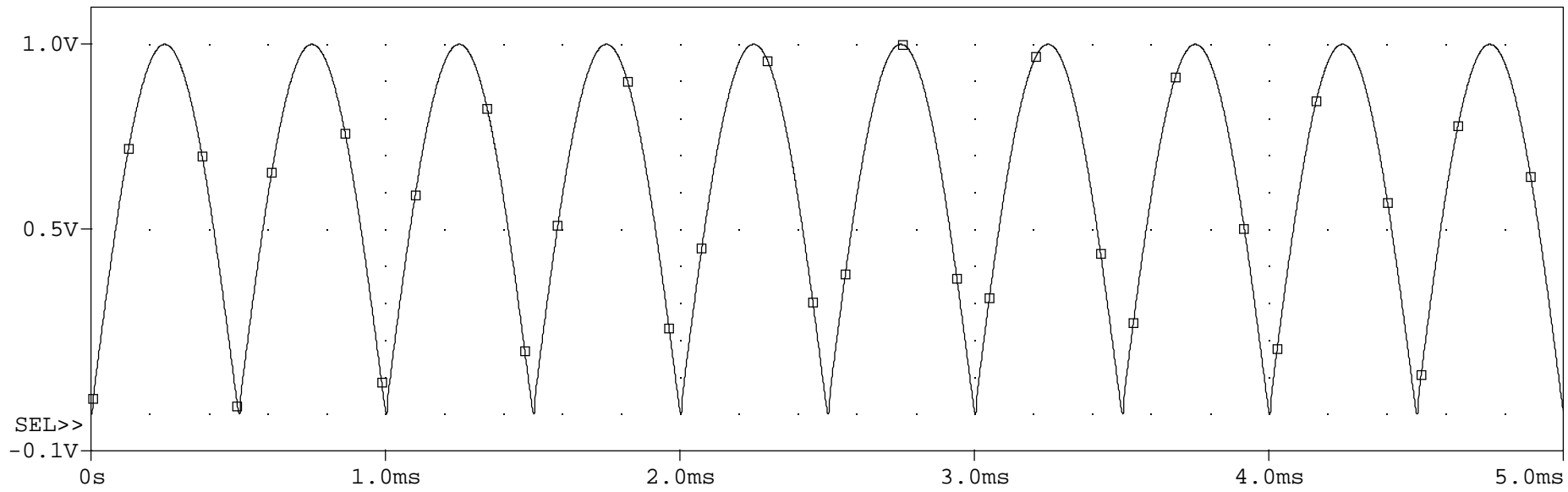
Simple Full Wave Rectifier (from Ideas for Design, Electronic Design, 11/25/82)

		ANALOG INNOVATIONS, Inc. 824 E. CATHEDRAL ROCK DRIVE PHOENIX, AZ 85048-6300 (480) 460-2350 FAX: (480) 460-2142	
Title: Simple Full Wave Rectifier (from Ideas for Design, Electronic Design, 11/25/82)			
Size A	FileName: ...FullWaveRectifier.sch		REV A
September 1, 2003, 2:11 PM		Sheet 1 of 1	

Simple Full Wave Rectifier (from Ideas for Design, Electronic Design, 11/25/82)

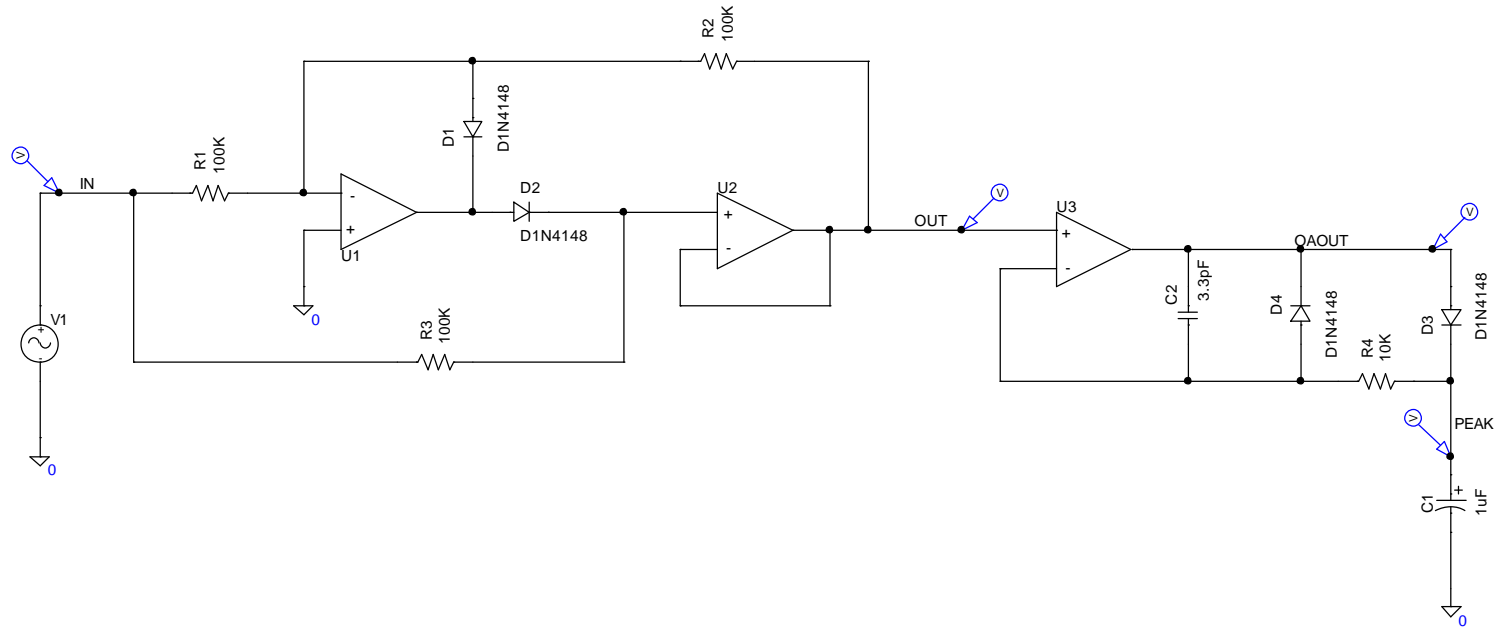


□ V(IN)

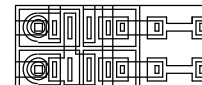


□ V(OUT)

Time



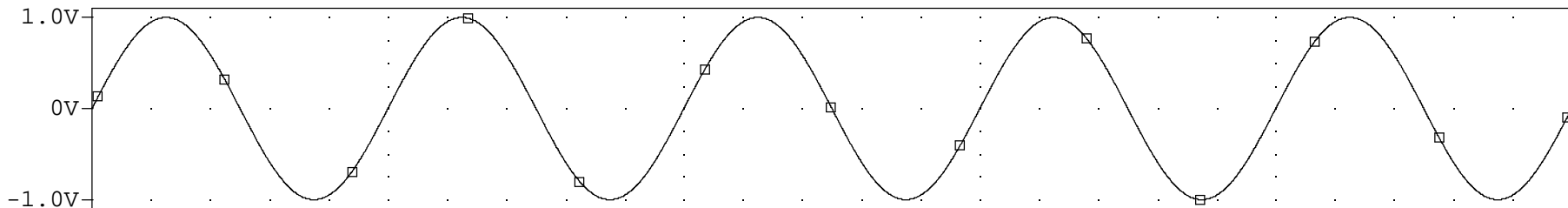
SMALL TIME CONSTANT  
PURPOSELY USED TO  
DEMONSTRATE DROOP



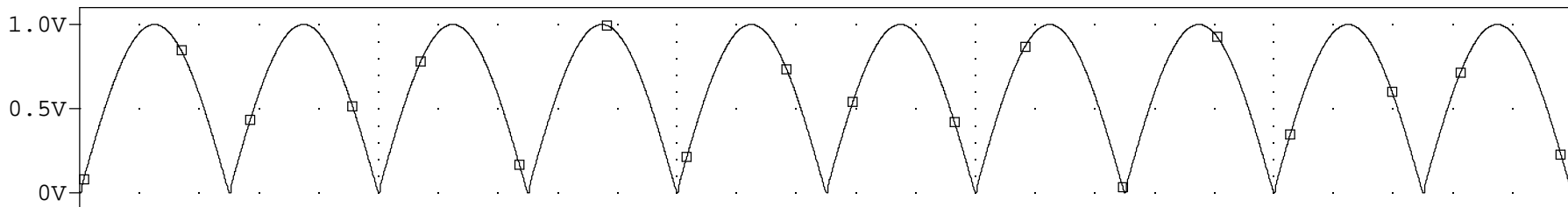
ANALOG INNOVATIONS, Inc.  
824 E. CATHEDRAL ROCK DRIVE  
PHOENIX, AZ 85048-6300  
(480) 460-2350 FAX: (480) 460-2142

Title: Simple Full Wave Rectifier with Peak Detector Added		
Size A	FileName: ...FullWaveRectifierWithPeakDetect.sch	REV A
September 2, 2003, 9:17 AM		Sheet 1 of 1

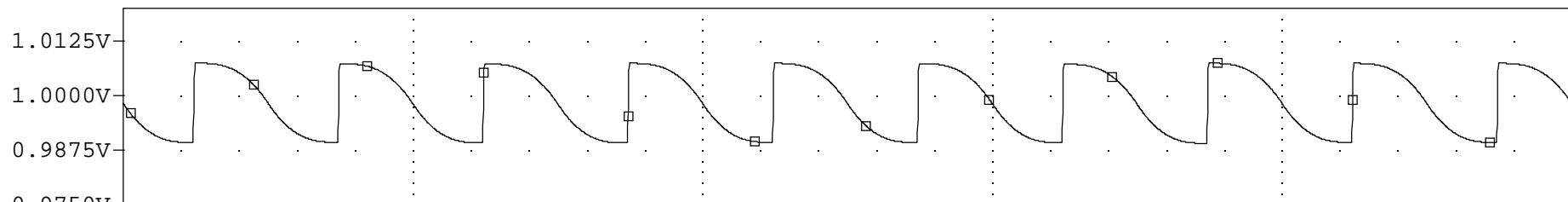
Simple Full Wave Rectifier with Peak Detector Added



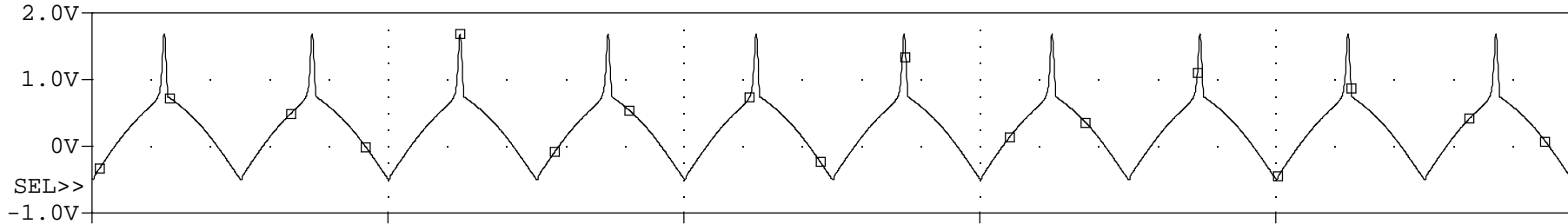
□ V(IN)



□ V(OUT)



□ V(PEAK)



□ V(OAOUT)

Time